



Duplex Apartments, Beverley House, Beverley Court, Shipton Road, York

Prices From £450,000

Stephensons
land & new homes

S

Beverley Court,
York
YO30 5AD

Est. 1871

Prices From £450,000

Prices from: £450,000 - Beautifully designed duplex apartments within the landmark Beverley House at Beverley Court, combining the grandeur of Victorian architecture with the comfort, energy efficiency and ease of exceptional modern living.

These quite stunning two-bedroom duplex apartments with generous private walled terraces (apt 2 & 3), within this transformed grand Victorian villa, set in a prime location on the doorstep of Homestead Park, presenting ideal city centre living or investments

Apartment 1: £495,000

Apartment 2: £450,000

Apartment 3: Sold Subject to Contract

These outstanding two-bedroom duplex homes offer a rare opportunity to enjoy elegant apartment living across two beautifully proportioned floors, with impressive ceiling heights, generous room sizes and thoughtfully designed layouts.

Designed with downsizers, professionals and lifestyle buyers in mind, each apartment provides bright and spacious open-plan kitchen and living spaces, two generous bedrooms with en suite bathrooms, excellent storage, allocated parking and beautifully landscaped communal surroundings.

Apartment 1 offers elegant living with a superb open-plan upper ground floor reception space with w/c and exceptional flexibility across the low ground with two bedrooms and two bathrooms.

Apartment 2 benefits from a particularly impressive lower ground floor living space, flooded with natural light and opening directly onto a private walled courtyard with gated access to the communal gardens, ideal for entertaining, outdoor dining or simply enjoying a peaceful private retreat. To the upper floor are two double bedrooms both with luxury en suites.



Imagery Disclaimer:
Please note that some may
photographs have been digitally
enhanced using CGI and AI-generated
furniture to assist with visualisation.
These images are for marketing
purposes only and may not reflect the
property's exact appearance,
contents, or condition at the time of
viewing.



At the heart of each home is a high-specification kitchen with quartz worktops, integrated appliances, feature hot water tap and beautifully designed cabinetry, creating a superb space for both everyday living and entertaining. Separate utility rooms, additional cloakrooms, underfloor heating to bathrooms and video entry systems ensure these homes deliver both practicality and premium comfort.

These apartments may also appeal to investors seeking to add a high-quality asset to their portfolio, with strong rental demand in this location and achievable yields in excess of 5%, offering both attractive income and long-term capital value.

Beverley Court represents one of York's most distinctive residential addresses, a carefully considered redevelopment of the historic Beverley House alongside exceptional contemporary residences, creating a unique and highly sought-after setting.

Overlooking the beautiful 14-acre Homestead Park and just moments from York Sports Club, residents can enjoy a scenic walk into the city via Homestead Park and riverside routes, offering a peaceful alternative to driving while keeping York's historic centre comfortably within reach.

The development offers beautifully landscaped communal areas, EV charging, secure cycle storage and excellent energy efficiency, providing the convenience, security and low-maintenance lifestyle many buyers are seeking without compromising on character, quality or location.

Beverley Court offers the space and elegance many buyers are used to, but with the simplicity, security and ease of a beautifully managed apartment setting.

Partners:

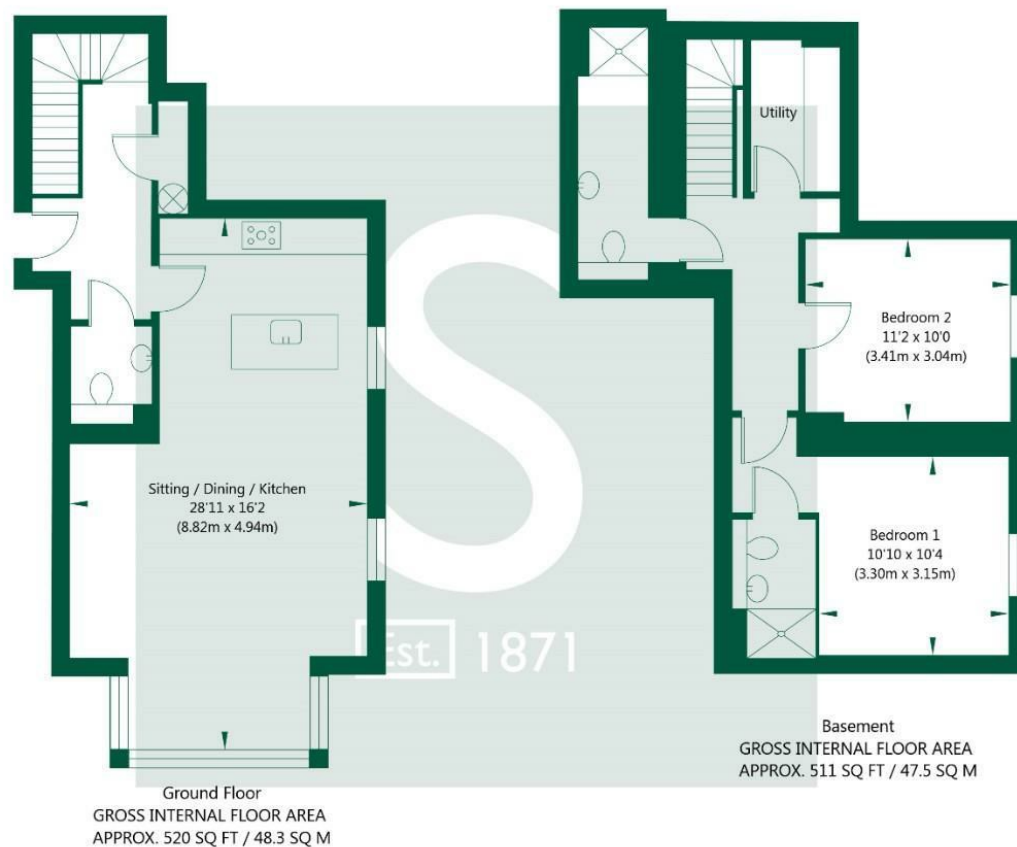
J F Stephenson MA (Cantab) FRICS FAAV
I E Reynolds BSc (Est Man) FRICS
R E F Stephenson BSc (Est Man) MRICS FAAV
N J C Kay BA (Hons) pg. dip MRICS
O J Newby FNAEA
J E Reynolds BA (Hons) MRICS
R L Cordingley BSc FRICS FAAV
J C Drewniak BA (Hons)
E G Newby MRICS
T Brooks MNAEA

Associate Partners:

N Lawrence
I Jarvis MNAEA

York: 01904 625533
Boroughbridge: 01423 324324
Easingwold: 01347 821145
Selby: 01757 706707
Haxby: 01904 809900

Apartment 1, Beverley Court, Shipton Road, York, YO30 5FZ



NOT TO SCALE - FOR ILLUSTRATIVE PURPOSES ONLY
APPROXIMATE GROSS INTERNAL FLOOR AREA 1031 SQ FT / 95.8 SQ M
All measurements and fixtures including doors and windows are approximate and should be independently verified.
www.exposurepropertymarketing.com © 2026

